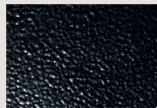


MERW 600 Series



B1 Satin Black



B2 Textured Black



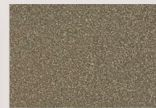
M13 Anodized Silver



T6 Pewter



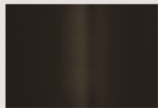
P9 Brushed Nickel



W13 Pearl Beige



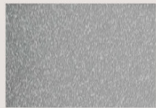
W1 Yolk White



Z1 Satin Bronze



Z3 Textured Bronze



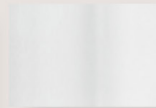
T4 Shimmer Gray



P2 Brushed Aluminum



W3 Textured White



W2 Gloss White



28435 Industry Drive., Valencia, California 91355
800-325-4448 / 661-257-0286
www.lightwayind.com • sales@lightwayind.com



Revision: 11/14/2024

MERW-600-LED

Construction:

- Steel housing and chassis
- Diffuser UV-stabilized, high impact resistant, DR acrylic
- 3/8" Sq Accent bars and rings are extruded aluminum

Light Source:

- LED
- Dimming to 10% **Included**

Notes:

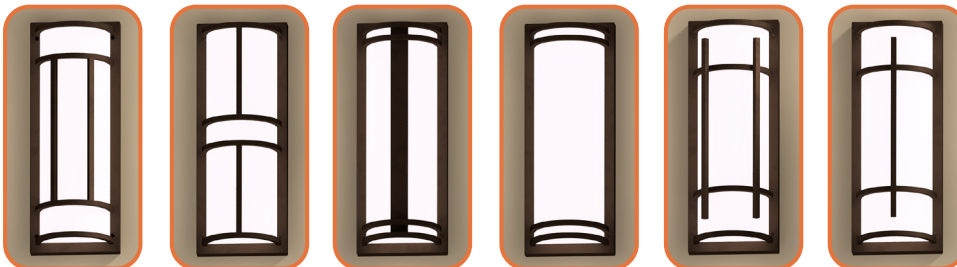
- Keyhole slots top and bottom
- Top and bottom white acrylic lens - standard
- Not all material and accent styles are available
- Optional photocell (21) increases fixture depth 1 1/2"
- Optional lens cover (ALC) eliminates up/down light
- Optional battery backup
- Build America, Buy America Act Compliant
- UL and CUL listed **WET** location
- LED Components
 - Replaceable Module
 - CRI > 90
 - Universal 120/277 volt standard
 - 5-Year Warranty on LED Components

- You may also like the [MANW](#) or [MENW](#) Series

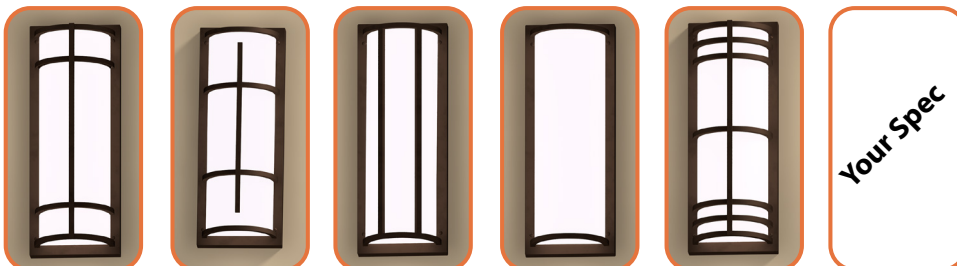
| | |
|-----------|--|
| Type: | |
| Job Name: | |



DESIGN OPTIONS (Choose your cage design)



MERW-A MERW-B MERW-C^{D1} MERW-D MERW-E MERW-F^{D1}

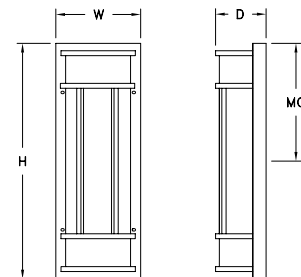


MERW-G^{D1} MERW-H^{D1} MERW-I MERW-J MERW-K^{D1} MERW-X

⁽¹⁾ Contact factory for assistance

Fixture Overall Dimensions

- "H" - 12" - 16" - 18" - 26" - 38" - 50"
- "W" - 6 1/2"
- "D" - 4"
- "D1" - 4 3/8"
- "MC" - 6" - 8" - 9" - 13" - 19" - 25"
- See 900 or 1100 Series for other width options



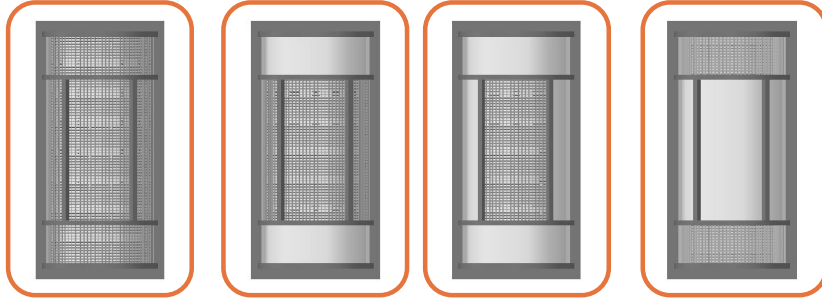
28435 Industry Drive., Valencia, California 91355
 800-325-4448 / 661-257-0286
www.lightwayind.com • sales@lightwayind.com



MERW-600-LED

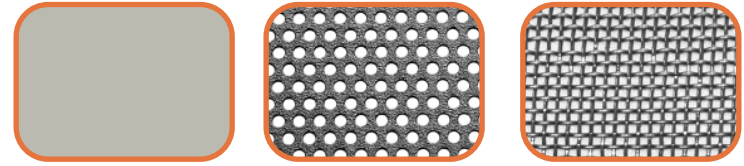
OPTIONAL CAGE ACCENTS (Not required, leave blank if undesired)

1) Optional Accent Location (Shown as "A" cage. Others are Similar)

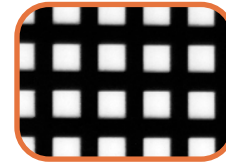


(SC) Screen Complete (CC) Center Complete (CH) Center Half (EC) End Complete

2) Accent Material (Required if Accent is chosen)



(S) Solid (P) Perforated (M) Mesh



(W) Waffle



(X) Custom⁽¹⁾

⁽¹⁾ Contact factory for assistance

ACCENT AVAILABILITY CHART BY CAGE STYLE

| | A | B | C | D | E | F-H | I | J | K |
|----|---------|---------|-------|---------|---|---------|-------|---------|-------|
| SC | S,P,M,W | S,P,M,W | S,P,W | S,P,M,W | | S,P,M,W | S,P,W | S,P,M,W | S,P,W |
| CC | S,P | | S,P,W | S,P,M,W | | S,P,M,W | --- | --- | S,P,W |
| CH | S,P,M,W | --- | --- | --- | | --- | | --- | --- |

ORDERING INFORMATION

Example: MERW-616-LED-O1C-3-B-Z1-WSA

MERW

| Size | LED | | | | | Kelvin | Cage | Finish | Diffuser | Options |
|---------|-------|-------|---------------|-----------|-------------|---------|------|-----------------|---|--|
| | | Watts | Source Lumens | Dimming | Energy Star | | | | | |
| 612-LED | F1H | 9 | 1400 | 0-10v | YES | 2 3000K | A | B1 Satin Black | WSA White Smooth Acrylic | DIM LED dimming driver (0 - 10v) DIMLD Line Voltage /TRIAC/ELV/120v Consult Factory |
| | F1P | 15 | 1361 | TRIAC/ELV | YES | 3 3500K | B | B2 Text Black | | |
| | | | | | | 4 4000K | D | Z1 Satin Bronze | | |
| 616-LED | O1C | 9 | 1210 | 0-10v | NO | | E | Z3 Text Bronze | Optional Cage Accents (See Page 2) | 21 Photocell - Specify voltage 01 - 120 volt 02 - 277 volt |
| 618-LED | O2A | 12 | 1600 | 0-10v | NO | | F | W1 Yolk White | | |
| 626-LED | O2C | 18 | 2420 | 0-10v | NO | | G | W2 Gloss White | | |
| 626-LED | F1Y | 30 | 3235 | TRIAC/ELV | YES | | H | W3 Text White | Material S Solid P Perforated Screen M Wire Mesh W Waffle Pattern | ALC Aluminum Lens Cover - See Notes 42 All Aluminum Construction ES Energy Star listed components |
| 638-LED | O3C | 27 | 3630 | 0-10v | NO | | I | T4 Shimmer Gray | | |
| 650-LED | O4C29 | 29 | 3412 | 0-10v | NO | | J | M13 Anod Silver | | |
| | O4C | 36 | 4840 | 0-10v | NO | | K | T6 Pewter | Optional Style SC Screen Complete CC Center Complete EC Ends Complete CH Center Half OX Custom | 39 J-Box with knockouts on all sides Battery Backup Options (Available with 0-10v only) BB10 10 Watts (1170lm) for 90-Minutes |
| | | | | | | | X | | | |
| | | | | | | | | | | |



28435 Industry Drive., Valencia, California 91355
800-325-4448 /661-257-0286
www.lightwayind.com • sales@lightwayind.com

