

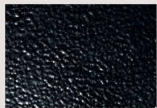
MRAW Series



Post Top See FOLP



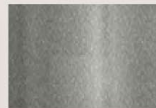
B1 Satin Black



B2 Textured Black



M13 Anodized Silver



T6 Pewter



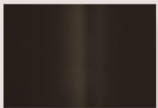
P9 Brushed Nickel



W13 Pearl Beige



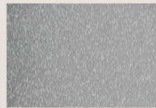
W1 Yolk White



Z1 Satin Bronze



Z3 Textured Bronze



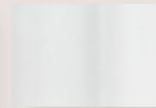
T4 Shimmer Gray



P2 Brushed Aluminum



W3 Textured White



W2 Gloss White



28435 Industry Drive., Valencia, California 91355
 West Coast Sales: 800-325-4448 / 661-257-0286 • fax 800-323-2346 / 661-257-0201
www.lightwayind.com • sales@lightwayind.com



MRAW-Series-LED

Construction:

- Steel housing and chassis
- Diffuser UV-stabilized, high impact resistant, DR acrylic
- Accent bars and rings are extruded aluminum

Light Source:

- LED
- Dimming to 10% **Included**

Notes:

- Integral mounting plate; keyhole slots
- Top and bottom white acrylic lens - standard
- Not all material and accent styles are available
- Optional photocell (21) increases fixture depth 1 1/2"
- Optional lens cover (ALC) eliminates up/down light
- Optional battery backup
- UL and CUL listed **WET** location
 - Build America, Buy America Act Compliant
 - CRI > 90
 - Universal 120/277 volt standard
 - 5-Year Warranty on LED Components

Height - 16" - 20" - 26" - 38" - 50"
 Width - 9"
 Depth - 5 1/2"
 D1 - 5 7/8"
 MC - 8" - 10" - 13" - 19" - 25"

Type:	
Job Name:	



ORDERING INFORMATION

Example: MRAW-916-LED-F-O2C-4-T4-WSA

MRAW

Size	LED	Watts	Source Lumens	Dimming	Energy Star	Kelvin	Cage	Finish	Diffuser	Options
						2 3000K	A	B1 Satin Black	WSA White Smooth Acrylic	DIM LED dimming driver (0 - 10v)
						3 3500K	B	B2 Text Black	Optional Cage Accents (See Page 2) Material S Solid P Perforated Screen M Wire Mesh W Waffle Pattern Style SC Screen Complete CC Center Complete EC Ends Complete CH Center Half	21 Photocell - Specify voltage 01 - 120 volt 02 - 277 volt ALC Aluminum Lens Cover - See Notes 39 J-Box with knockouts on all sides Battery Backup Options (Available with 0-10v only) BB10 10 Watts (1170lm) for 90-Minutes
					4 4000K	C	Z1 Satin Bronze			
916-LED	O2C	18	2420	0-10v	NO	D	Z3 Text Bronze			
920-LED	O2C	18	2420	0-10v	NO	E	W1 York White			
	O4B	29	4000	0-10v	NO	F	W2 Gloss White			
926-LED	O2C	18	2420	0-10v	NO		T4 Shimmer Gray			
	O4C	36	4840	0-10v	NO		M13 Anod Silver			
938-LED	O3C	27	3630	0-10v	NO		T6 Pewter			
	O6C	54	7260	0-10v	NO		W13 Pearl Beige			
950-LED	O4C29	29	3412	0-10v	NO		Optional (See Price List)			
	O4C	36	4840	0-10v	NO		M17 Brass Powder			
	O8C	72	9680	0-10v	NO		P2 Brushed Alum P9 Brushed Nickel			



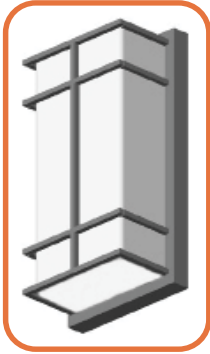
28435 Industry Drive., Valencia, California 91355
 800-325-4448 / 661-257-0286
 www.lightwayind.com • sales@lightwayind.com



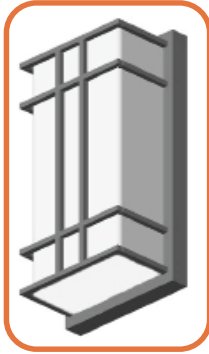
MRAW

Cage Styles and Accents

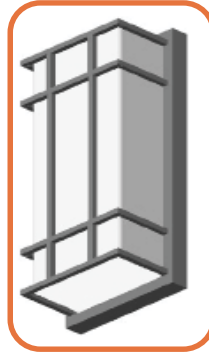
Cage Styles



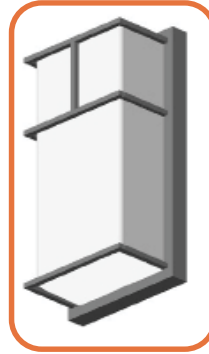
MRAW-A



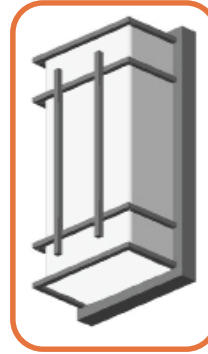
MRAW-B



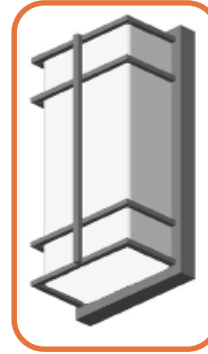
MRAW-C



MRAW-D



MRAW-E^{D1}

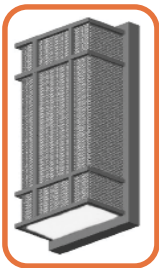


MRAW-F^{D1}

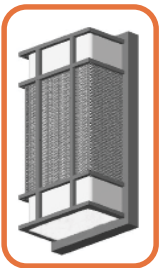
OPTIONAL CAGE ACCENTS (Not required, leave blank if undesired)

1) Optional Accent Location

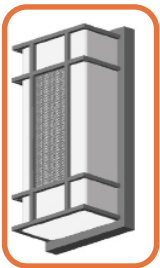
(Shown as "C" cage. Others are Similar)



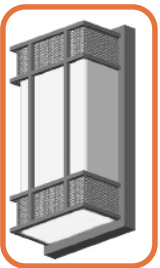
SC
Screen
Complete



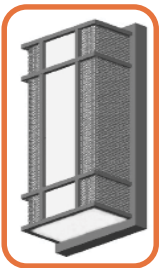
CC
Center
Complete



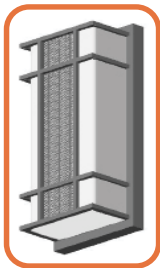
CH
Center
Half



EC
Ends
Complete



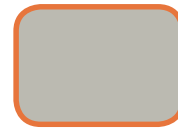
SF
Sides
Full



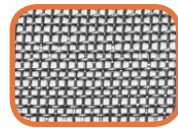
CF
Center
Full

2) Accent Material

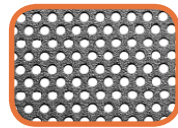
(Required if Accent is chosen)



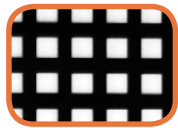
(S) Solid



(M) Mesh



(P) Perforated



(W) Waffle

ACCENT AVAILABILITY CHART BY CAGE STYLE

	A	B	C	D	E	F
SC	S,P,W	S,P,W	S,P,W	S,P,W	S,P,W	S,P,W
CC	S,P,W	S,P,W	S,P,W	---	S,P,W	S,P,W
CH	---	S,M,P,W	S,M,P,W	---	S,P,W	---
EC	S,P,W	S,P,W	S,P,W	S,P,W	S,P,W	S,P,W
SF	---	S,P,W	S,P,W	---	---	---
CF	---	S,M,P,W	S,M,P,W	---	---	---

