

# MANW 1100 Series



B1 Satin Black



B2 Textured Black



M13 Anodized Silver



T6 Pewter



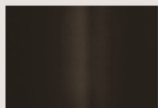
P9 Brushed Nickel



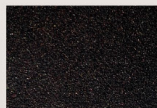
W13 Pearl Beige



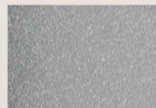
W1 Yolk White



Z1 Satin Bronze



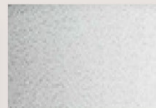
Z3 Textured Bronze



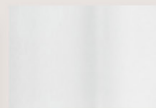
T4 Shimmer Gray



P2 Brushed Aluminum



W3 Textured White



W2 Gloss White



28435 Industry Drive., Valencia, California 91355  
West Coast Sales: 800-325-4448 / 661-257-0286 • fax 800-323-2346 / 661-257-0201  
East Coast Sales: 866-350-0991 • fax 866-490-5754  
[www.lightwayind.com](http://www.lightwayind.com) • [sales@lightwayind.com](mailto:sales@lightwayind.com)



Revision: 11/14/2024

# MANW-LED-1100

## Construction:

- Steel housing and chassis
- Diffuser UV-stabilized, high impact resistant, DR acrylic

## Light Source:

- LED
- Dimming to 10% **Included**

## Notes:

- Keyhole slots left and right
- Top and bottom white acrylic lens - standard
- Optional photocell (21) increases fixture depth 1 1/2"
- Optional battery backup
- Optional lens cover (NCL) eliminates up/down light
- Build America, Buy America Act Compliant
- UL and CUL listed **WET** location
  - Replaceable Module
  - CRI > 90
  - Universal 120/277 volt standard
  - 5-Year Warranty on LED Components

• You may also like the [MERW](#) or [MENW](#) Series

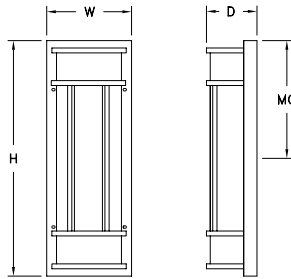
• See 600 or 900 Series for other width options

Height - 10.5" - 18" - 26" - 38" - 50"

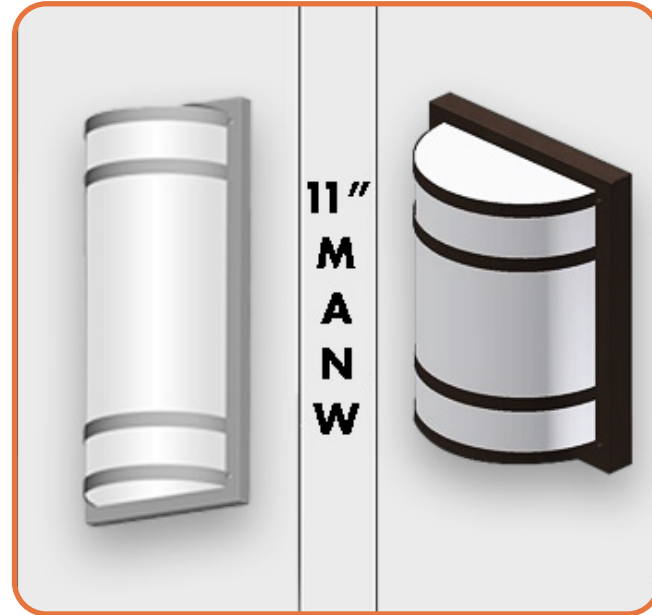
Width - 11.25"

Depth - 6"

"MC" - 5.25" - 9" - 13" - 19" - 25"



Type:	
Job Name:	



## ORDERING INFORMATION

Example: MANW-1126-LED-O4C-4-B-Z1-WSA

MANW

Size	LED					Kelvin	Cage	Finish	Diffuser	Options
		Watts	Source Lumens	Dimming	Energy Star					
						2 3000K	A	B1 Satin Black	WSA White Smooth Acrylic	DIM LED dimming driver (0 - 10v) DIMLD Line Voltage /TRIAC/ELV/120v Consult Factory
					3 3500K	B	B2 Text Black			
					4 4000K	D	Z1 Satin Bronze			21 Photocell - Specify voltage 01 - 120 volt 02 - 277 volt
						C	Z3 Text Bronze			
1110-LED	O2A	12	1600	0-10v	NO		E	W1 Yolk White		NCL Lens Cover Top & Bottom 42 Aluminum Construction ES Energy Star listed components
	O3C	27	3630	0-10v	NO		F	W2 Gloss White		
	O2C	18	2420	0-10v	NO		X	T4 Shimmer Gray		
1118-LED	O3C	27	3630	0-10v	NO			M13 Anod Silver		39 J-Box with knockouts on all sides
	O6C	54	7260	0-10v	NO			T6 Pewter		
1126-LED	O4C	36	4840	0-10v	NO			W13 Pearl Beige		Battery Backup Options (Available with 0-10v only) BB10 10 Watts (1170lm) for 90-Minutes
	F1Y	30	3235	TRIAC/ELV	YES					
	O4C29	29	3412	0-10v	NO					
1138-LED	O3C	27	3630	0-10v	NO					
	O6C	54	7260	0-10v	NO					
	O4C	36	4840	0-10v	NO					
1150-LED	O8C	72	9680	0-10v	NO					
	O4C	36	4840	0-10v	NO					
	O8C	72	9680	0-10v	NO					

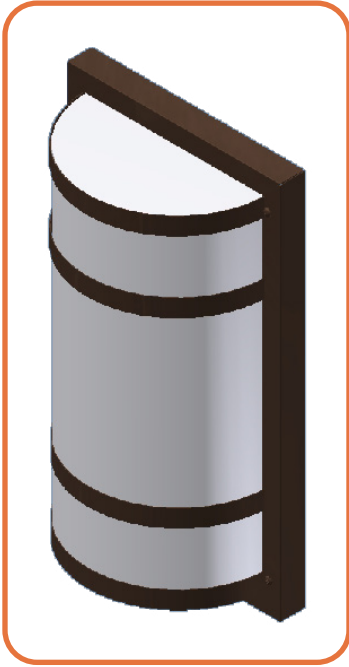


28435 Industry Drive., Valencia, California 91355  
800-325-4448 / 661-257-0286 • fax 800-323-2346 / 661-257-0201  
www.lightwayind.com • sales@lightwayind.com

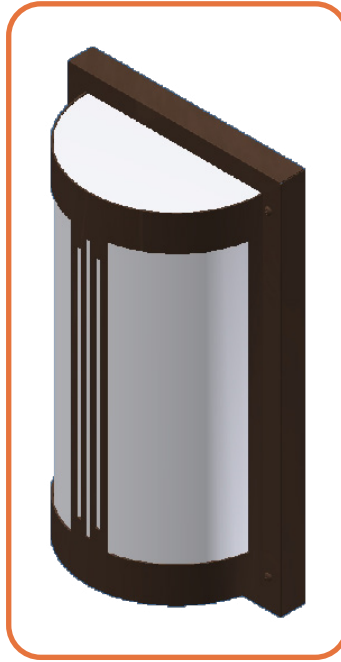


# MANW Series

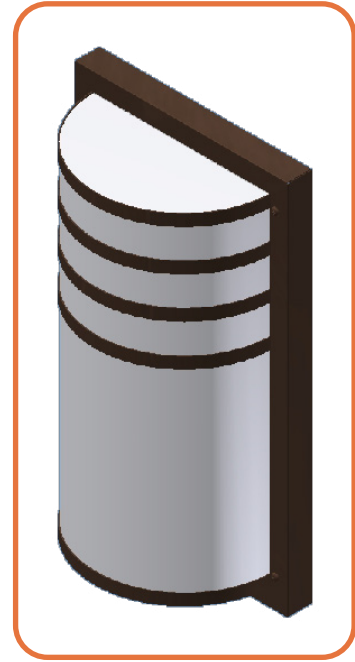
## Cage Styles and Accents



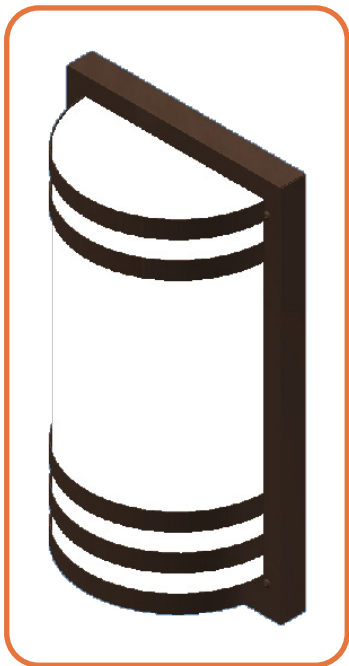
**MANW-A**



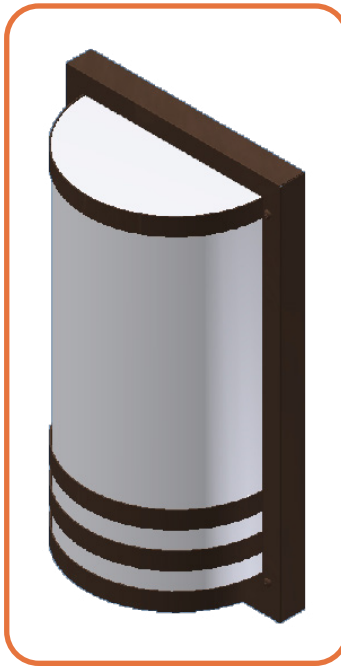
**MANW-B**



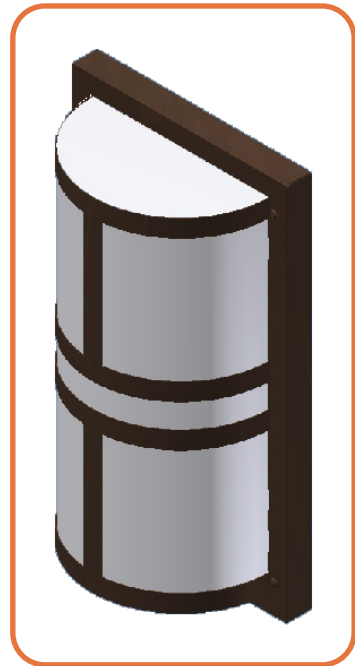
**MANW-C**



**MANW-D**



**MANW-E**



**MANW-F**

