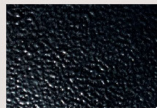


MIAW Series



B1 Satin Black



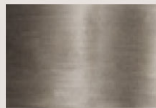
B2 Textured Black



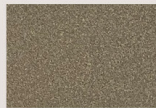
M13 Anodized Silver



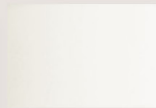
T6 Pewter



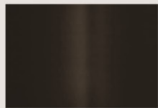
P9 Brushed Nickel



W13 Pearl Beige



W1 Yolk White



Z1 Satin Bronze



Z3 Textured Bronze



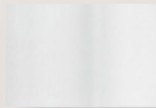
T4 Shimmer Gray



P2 Brushed Aluminum



W3 Textured White



W2 Gloss White



28435 Industry Drive., Valencia, California 91355
 West Coast Sales: 800-325-4448 / 661-257-0286 • fax 800-323-2346 / 661-257-0201
 East Coast Sales: 866-350-0991 • fax 866-490-5754
www.lightwayind.com • sales@lightwayind.com



Revision: 06/28/2022

MIAW-600-Series-LED

Construction:

- Steel housing, chassis and cage
- Diffuser UV-stabilized, high impact resistant, DR acrylic

Light Source:

- LED
- Dimming to 10% **Included**

Notes:

- Integral mounting plate; keyhole slots left and right
- Top and bottom white acrylic lens- standard
- Optional photocell (21) increases fixture depth 1 ½"
- Optional battery backup
- Optional lens cover (ALC) prevents up/down light
- UL and CUL listed **WET** location
- LED Components
 - Replaceable Module
 - CRI > 90
 - Universal 120/277 volt standard
 - 5-Year Warranty on LED Components

Type:	
Job Name:	



"H" - 18" - 26" - 38"
 "W" - 6 ½"
 "D" - 4"
 "MC" - 9" - 13" - 19"



ORDERING INFORMATION

Example: MIAW-626-LED-O2C-4-B1-WSA

MIAW

Size	LED					Kelvin	Cage	Finish	Diffuser	Options
		Watts	Source Lumens	Dimming	Energy Star					
618-LED	O2A	12	1600	0-10v	NO	2 3000K 3 3500K 4 4000K		B1 Satin Black B2 Text Black Z1 Satin Bronze Z3 Text Bronze W1 Yolk White W2 Gloss White T4 Shimmer Gray M13 Anod Silver T6 Pewter W13 Pearl Beige	WSA White Smooth Acrylic	DIM LED dimming driver (0 - 10v)
626-LED	O2C	18	2420	0-10v	NO			W17 Brass Powder P2 Brushed Alum P9 Brushed Nickel		21 Photocell - Specify voltage 01 - 120 volt 02 - 277 volt
638-LED	O3C	27	3630	0-10v	NO					ALC Aluminum Lens Cover - See Notes 39 J-Box with knockouts on all sides
<p>Battery Backup Options (Available with 0-10v only) BB10 10 Watts (1170lm) for 90-Minutes</p>										



28435 Industry Drive., Valencia, California 91355
 West Coast Sales: 800-325-4448 / 661-257-0286 • fax 800-323-2346 / 661-257-0201
 East Coast Sales: 866-350-0991 • fax 866-490-5754
 www.lightwayind.com • sales@lightwayind.com



MIAW-900-Series-LED

Construction:

- Steel housing, chassis and cage
- Diffuser is .10" thick extruded white acrylic

Light Source:

- LED
- Dimming to 10% **Included**

Notes:

- Integral mounting plate; keyhole slots left and right
- Top and bottom white acrylic lens- standard
- Optional photocell (21) increases fixture depth 1 1/2"
- Optional battery backup
- Optional lens cover (ALC) prevents up/down light
- UL and CUL listed **WET** location
- LED Components
 - Replaceable Module
 - CRI > 90
 - Universal 120/277 volt standard
 - 5-Year Warranty on LED Components

Type:	
Job Name:	



"H" - 20" - 26" - 38"
 "W" - 9 1/2"
 "D" - 5 1/2"
 "MC" - 10" - 13" - 19"



ORDERING INFORMATION

Example: MIAW-926-LED-O4C-4-B1-WSA

MIAW

Size	LED					Kelvin	Cage	Finish	Diffuser	Options
		Watts	Source Lumens	Dimming	Energy Star					
920-LED	O2C	18	2420	0-10v	NO	2 3000K 3 3500K 4 4000K		B1 Satin Black B2 Text Black Z1 Satin Bronze Z3 Text Bronze W1 Yolk White W2 Gloss White T4 Shimmer Gray M13 Anod Silver T6 Pewter W13 Pearl Beige	WSA White Smooth Acrylic	DIM LED dimming driver (0 - 10v)
	O4A	24	3200	0-10v	NO					
926-LED	O2C	18	2420	0-10v	NO					21 Photocell - Specify voltage 01 - 120 volt 02 - 277 volt
	O4C	36	4840	0-10v	NO					
938-LED	O3C	27	3630	0-10v	NO					ALC Aluminum Lens Cover - See Notes
								Optional (See Price List) M17 Brass Powder M16 Antique Brass P2 Brushed Alum P9 Brushed Nickel		Optional Voltage -347V Input voltage to 347v
										Battery Backup Options (Available with 0-10v only) BB10 10 Watts (1170lm) for 90-Minutes



28435 Industry Drive., Valencia, California 91355
 West Coast Sales: 800-325-4448 / 661-257-0286 • fax 800-323-2346 / 661-257-0201
 East Coast Sales: 866-350-0991 • fax 866-490-5754
 www.lightwayind.com • sales@lightwayind.com

